

9th
annual

WINCHCOMBE

Festival

MUSIC & ARTS

20–27 May 2019

ART TRAIL



Scan to find
out more ↓



WELCOME

Winchcombe Art Trail

Join Winchcombe's popular annual Art Trail for a unique opportunity to enjoy and buy original works of art and craft directly from the artists.

As well as visiting studios and exhibitions in Winchcombe, a short drive out of the town will take you to the picturesque Cotswold villages of Greet, Toddington, Stanway and Hawling.

Art workshops for adults and children will also be held throughout the week. For more details visit

www.winchcombefestival.co.uk

Please note: The Festival cannot accept responsibility for any personal injury, loss or damage as a result of members of the public visiting Art Trail venues.



Festival enquiries:

Tourist Information Centre (TIC), Town Hall High Street, Winchcombe GL54 5LJ
Mon to Sun: 10.00 am - 3.30 pm Tel: 01242 602925

www.winchcombefestival.co.uk

1 WINCHCOMBE IN STITCHES

Details: Textile art re-creating our town's beautiful buildings and views in fabric. A community project set up for the Festival by local women, with sewing skills ranging from novice to expert.

Venue: St Peters Church, Gloucester Street, Winchcombe GL54 5LU

Time: 10.00am – 5.00pm daily, excluding church services

Access: Disabled access

Contact: Margaret Collins 07913 514908



1 STEPHEN BELINFANTE

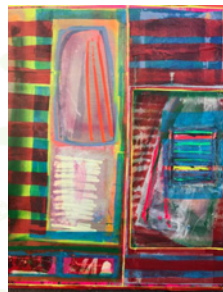
Details: Stephen makes paintings using a variety of materials, ranging from collaged paper to acrylic and household paints, gaffer tape and bleach.

Venue: St Peters Church, Gloucester Street, Winchcombe GL54 5LU

Time: 10.00am – 5.00pm daily, excluding church services

Access: Disabled access

Contact: stephen@stephenbelinfante.com www.stephenbelinfante.com



1 MAUREEN CHEW

Details: Watercolour landscapes of local scenes and seascapes. Recently started working with acrylic paints, doing collage and coastal scenes around Britain.

Venue: St Peters Church, Gloucester Street, Winchcombe GL54 5LU

Time: 10.00am – 5.00pm daily, excluding church services

Access: Disabled access

Contact: 01242 673134



1 TRUDI HAYDEN

Details: Paintings inspired by the nature around Winchcombe and beyond.

Venue: St Peters Church, Gloucester Street, Winchcombe GL54 5LU

Time: 10.00am – 5.00pm daily, excluding church services

Access: Disabled access

Contact: 07776 441203 trudi@trudihayden.co.uk



1 SARAH LOVEDAY

Details: Paintings in oil of scenes and landscapes local and abroad. Drawings of same.

Venue: St Peters Church, Gloucester Street, Winchcombe GL54 5LU

Time: 10.00am – 5.00pm daily, excluding church services

Access: Disabled access

Contact: 01242 602887 sarahkloveday@googlemail.com





1 MARTIN PODD

Details: Watercolours

Venue: St Peters Church, Gloucester Street, Winchcombe GL54 5LU

Time: 10.00am – 5.00pm daily, excluding church services

Access: Disabled access

Contact: 01242 609011 mspodd@gmail.com

2 COTSWOLD ARTS & CRAFTS OF THE 1930S

Details: A mixed media show of pottery, graphic design, textiles and print art of the period by the Winchcombe potter Michael Cardew and his circle of creative friends.

Venue: Long Room Gallery, Queen Anne House, High Street, Winchcombe GL54 5LJ

Time: Mon – Sat 11.00am to 5.00pm (otherwise by prior appointment)

Contact: John Edgeler 01242 602319 or 07791 782243

www.winchcombearchivecollection.wordpress.com



3 JEN BEETSON

Details: Acrylic paintings exploring the coastline of South West Ireland

Venue: Archway Barn, 18 High Street, Winchcombe GL54 5LJ

Time: Mon – Sat: 10.00am to 5.00pm, Sun: 11.00am to 4.00pm.

Contact: 07765 156877 colour-in@hotmail.co.uk

4 WINCHCOMBE ART CLASS

Details: The Winchcombe Painting Class is exhibiting both advanced and beginners' oil and acrylic paintings. This collection of work illustrates their diverse styles and explorative approaches to technique, theme, medium and all-round authentic art making.

Venue: The Guide Hall, High Street, Winchcombe, GL54 5LJ

Time: Friday 24, Saturday 25, Sunday 26 May 10am – 4pm

Access: Disabled access. Down passage between Ace DIY and Dandelion Blue

Contact: Dreda Corlett 07928 288321



5 MERCIA FINE ART

Details: Showcasing Robert Goldsmith a professional artist and illustrator since 1980. He is best known for his exceptional watercolours, and is fascinated by the different light, shade and reflection that is conjured by changing weather conditions. His technique in watercolour paintings is ideally suited to the local subjects which inspire his work.

Venue: High Street, Winchcombe

Time: Mon-Wed 9-5. Thur 9-12. Fri-Sat 9-5. Sun Closed.

Contact: 01242 603877 merciafineart@hotmail.co.uk

www.merciafineart.co.uk



6 SAM BUCKINGHAM

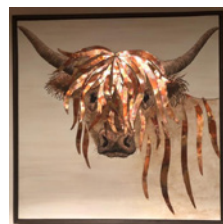
Details: Works in a mixed media of acrylics, pastes combined with metals and solder.

Venue: The Museum Shop, High Street, Winchcombe

Time: 10am- 5pm everyday

Contact: 07951 480526 samanthabuckingham1@gmail.com

www.sambuckinghamart.com



6 BEVERLEY PERRY

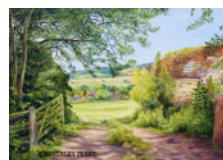
Details: Scenes with expressions of warmth, colour and personality created by a local passionate artist

Venue: The Museum Shop, High Street, Winchcombe

Time: 10am- 5pm everyday

Contact: beverley.perry@blueyonder.co.uk

www.beverleyperryartist@weebly.com



7 INKDANDY STUDIO

Details: With a background in costume design Lizzie Povey creates illustrative and characterful art prints currently inspired by living in the Cotswold countryside.

Venue: Honey Bea's Café, 6 Hailes Street, Winchcombe, GL54 5HU

Time: Tuesday – Saturday 10-5 and Sunday 11-4

Access: Disabled access

Contact: 01242 352392 www.inkdandystudio.com



8 THE CRAFTS PEOPLE OF STANWAY

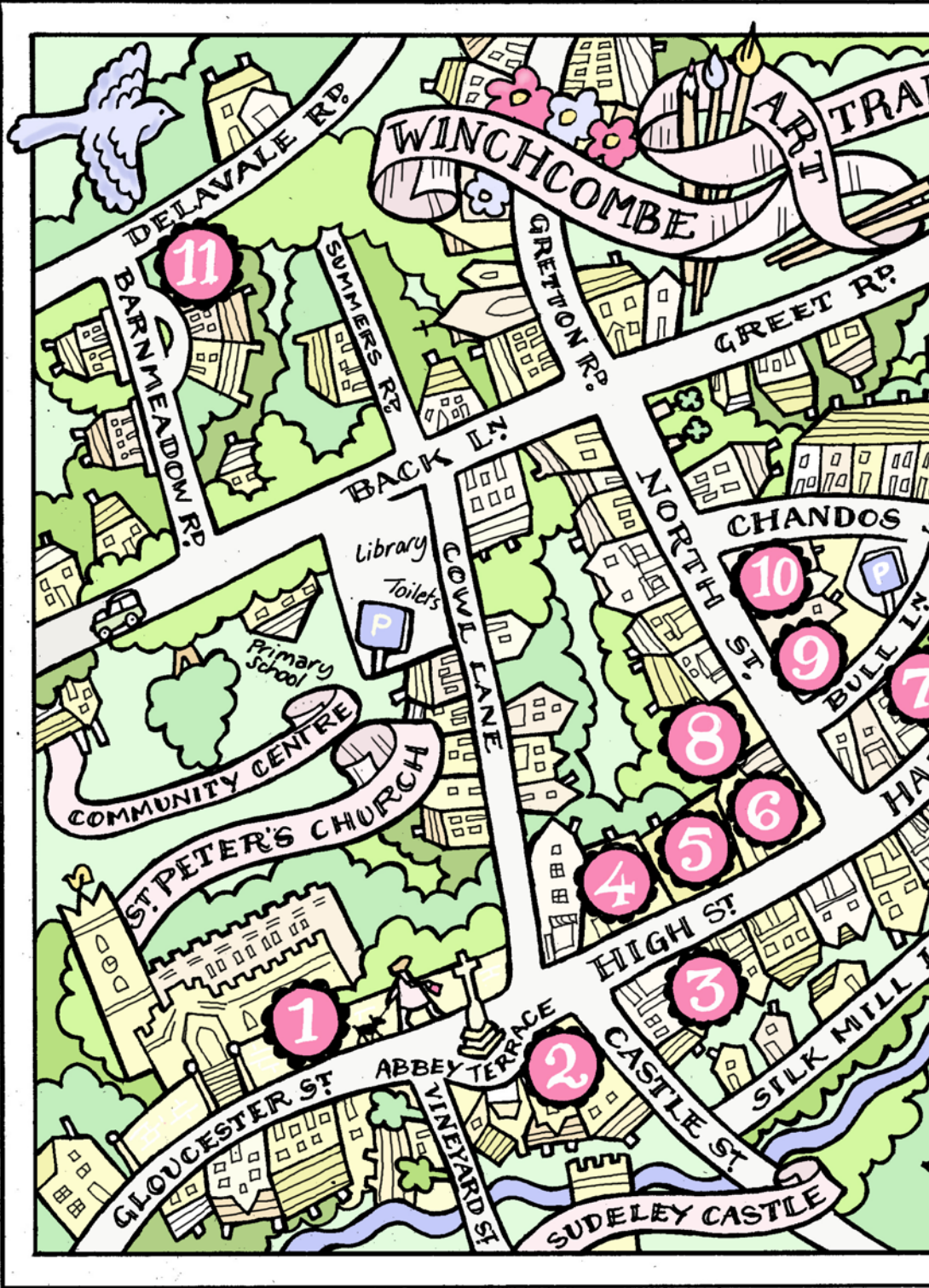
Venue: Food Fanatics, 12 North Street, Winchcombe GL54 5LH

Time: Monday – Saturday 8am – 6pm, Sunday 10am – 5pm

Access: Disabled access

Contact: www.food-fanatics.co.uk





WINCHCOMBE ART TRAIL

11

10

9

8

6

5

4

3

2

1

GLoucester St

Abbey Terrace

Vineyard St

Castle St

Silk Mill

SUDELEY CASTLE

High St

HA

Bull Ln

CHANDOS

NORTH ST

COML EANE

BACK LN

GREETON RD

GREET RD

DELAVALE RD

BARNMEADOW RD

SUMMERS RD

Primary School

Library
Toilets

COMMUNITY CENTRE

ST. PETER'S CHURCH

ART TRAIL







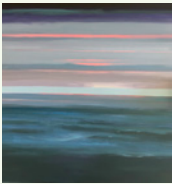
9 TARA DAVIDSON

Details: Sculptural ceramic birdbaths and flowers for the garden
Venue: Postmasters Lodging, The Old Sorting Office, 27 North Street, Winchcombe GL54 5PS
Time: Monday 20th May 12 noon to 4pm; Friday, Saturday, Sunday, BH Monday 11 to 4pm
Contact: 07948 966957 tara@tarajaneceramics.com
www.tarajaneceramics.com



9 BAOBAB TREE MOSAICS

Details: Stained glass mosaics for the garden by Yvette Green
Venue: Postmasters Lodging, The Old Sorting Office, 27 North Street, Winchcombe GL54 5PS
Time: Monday 20th May 12 noon to 4pm; Friday, Saturday, Sunday, BH Monday 11 to 4pm
Contact: Yvette Green Tel: 07740 434843
www.baobabtreemosaic.co.uk



10 VARIOUS ARTISTS

Details: Art displayed by various artists who are part of the art trail
Venue: The Lion, North Street, Winchcombe, GL54 5PS
Time: Monday – BH Monday 9.30am – 11pm
Contact: www.thelionwinchcombe.co.uk



11 BARBARA CURRY

Details: Oil paintings on board and canvas, at affordable prices. Mainly local landscapes, but also flowers and travels, with a focus on seasonal changes, colour and light. Greetings cards and calendars available.
Venue: Orchard House, 1 Orchard Rd, Winchcombe, GL54 5QB
Time: Monday 20th May- Thursday 24th: 11am - 4pm
Friday 25th and Saturday 26th: 11am - 7pm
Sunday 26th: 11am - 4pm, Monday 27th: 11am - 5pm
Access: Safe parking in front of house. Access to exhibition through side gate. Disabled access
Contact: 01242 604118 barbara.i.curry@googlemail.com

12 CHARINGWORTH TEXTILES

Details: Textile art made by Susan Wakeford and other members of Brockhampton Quilters. Landscape and nature pictures, wall hangings, bowls, cushions, journal covers, and Susan's famous pear pin cushions. Textile demonstrations every day.

Venue: Charingworth Court, Broadway Road, Winchcombe GL54 5JN

Time: Tuesday – Sunday 11am - 5pm CLOSED BH MONDAY

Access: Ring for disabled parking

Contact: 01242 603033 07791 353779 susanwakeford@gmail.com

<https://susanwakefordtextiles.tumblr.com/>



12 CHARINGWORTH SCULPTURE

Details: Original sculptures, many for sale, in various media (stone, metal, wood, glass, willow) created by Cotswolds and regional artists, set in the beautiful gardens in Charingworth Court.

Venue: Charingworth Court, Broadway Road, Winchcombe GL54 5JN

Time: Tuesday – Sunday 11am - 5pm CLOSED BH MONDAY

Access: Ring for disabled parking

Contact: 01242 603033 07791 353779 susanwakeford@gmail.com

<https://susanwakefordtextiles.tumblr.com/>



13 JUDE SKINNER

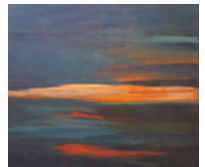
Details: Abstract expressionist paintings in pastel and tempera, and icons in traditional materials including 24ct gold.

Venue: Harebell Cottage, Beckett's Lane, Greet, Cheltenham, GL54 5NX

Time: Monday – Monday 10.30am - 5pm, Sunday 12.30pm - 5pm

Access: Good parking on premises. Paintings on ground and first floor

Contact: 07709 802633 Jude.skinner42@gmail.com



14 WINCHCOMBE POTTERY

Details: Domestic wood-fired pottery

Venue: Becketts Lane, Greet GL54 5NU

Time: Mon to Fri 8.00am – 4.00pm, Saturday 10.00am – 4.00pm
Sunday 12.00 noon – 4.00pm

Access: Parking on Becketts Lane. Restricted access

Contact: 01242 602462 www.winchcombepottery.co.uk





15 JANE SHERWOOD

Details: Natural Willow Crafts with willow demonstrations and courses. For more info contact Jane.

Venue: Silverwood, Church Lane, Toddington GL54 5DN

Time: Monday 20th May – Monday 27th May inclusive 10.00am – 5.00pm
Refreshments available Friday Saturday Sunday and BH Monday

Access: Parking and disabled access

Contact: 07895 820276 or 01242 620919



15 ED ALVIS

Details: Metal sculptures inspired by nature

Venue: Silverwood, Church Lane, Toddington GL54 5DN

Time: Monday 20th May – Monday 27th May inclusive 10.00am – 5.00pm
Refreshments available Friday Saturday Sunday and BH Monday

Access: Parking and disabled access

Contact: 07792 061352



16 ROY MARSHALL

Details: Abstract and figurative paintings in a variety of media

Venue: Brandy Cottage, 4 The Square, Church Lane, Toddington GL54 5DJ

Time: Monday, Wednesday, Friday 2.00pm – 7.00pm
Saturday, Sunday, Bank Holiday Monday 2.00pm – 7.00pm
CLOSED Tuesday and Thursday

Access: Parking but unsuitable for wheelchairs

Contact: 07955 626894 roy4square@gmail.com

All four of the following workshops will be open, although artists may be called away. If you wish to see a specific artist, please call ahead to ensure they are available.

17 KATIE MORGAN

Details: Decorative painting and illustrated maps

Venue: Old Stable Yard, Stanway GL54 5PQ

The workshops surround Stanway Watermill, which is next to Stanway House and Fountain

Time: Monday – Sunday 10am – 5pm BH Monday 11am – 3pm

Access: There will be a group exhibition selling art in Rob Langley's workshop that does have disabled access. Please bring cash rather than credit cards as internet access is very poor.

Contact: 07787 904421 www.kbmorgan.co.uk



17 ROB LANGLEY

Details: Unique, innovative, rustic furniture

Venue: Old Stable Yard, Stanway GL54 5PQ

The workshops surround Stanway Watermill, which is next to Stanway House and Fountain

Time: Monday – Sunday 10am – 5pm BH Monday 11am – 3pm

Access: There will be a group exhibition selling art in Rob Langley's workshop that does have disabled access. Please bring cash rather than credit cards as internet access is very poor.

Contact: 07854 199914 www.robertlangleyfurniture.co.uk



17 JOSEPHINE BAKER

Details: Silversmith. Bespoke silver jewellery, designed and handmade.

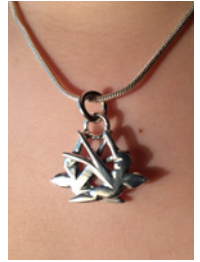
Venue: Old Stable Yard, Stanway GL54 5PQ

The workshops surround Stanway Watermill, which is next to Stanway House and Fountain

Time: Monday – Sunday 10am – 5pm BH Monday 11am – 3pm

Access: There will be a group exhibition selling art in Rob Langley's workshop that does have disabled access. Please bring cash rather than credit cards as internet access is very poor.

Contact: 07928 417362 www.josephinebaker-silversmith.com



17 RICHARD PODD

Details: Stone Mason, carver letterer and designer

Venue: Old Stable Yard, Stanway GL54 5PQ

The workshops surround Stanway Watermill, which is next to Stanway House and Fountain

Time: Monday – Sunday 10am – 5pm BH Monday 11am – 3pm

Access: There will be a group exhibition selling art in Rob Langley's workshop that does have disabled access. Please bring cash rather than credit cards as internet access is very poor.

Contact: 07504344519



18 DAVID DURSTON

Details: Art ranges from larger abstracts on canvas in mixed media, through to watercolours and prints. Durston has worked in Gloucestershire since 1967. In 1983 awarded S.W. Arts Major Award and Purchase

Venue: 1 Hawling Lodge Cottage, Hawling GL54 5SY. Also exhibiting at Corner Cupboard Inn, 83, Gloucester Street, Winchcombe GL54 5LX

Time: Monday to Sunday 1pm – 5pm CLOSED Thursday

Access: Parking. No wheelchair access

Contact: 07881 595696 Durston330@btinternet.com



FREE ONE DAY GYM PASS

VALID UNTIL DECEMBER 2019

body4you
PERSONAL FITNESS

Personal Training • Group Sessions • In-home Personal Training

David and Nick are offering a FREE DAY PASS for the use of Winchcombe's Body4you personal training facility. The gym is fully equipped with a variety of machines including a Power Plate, a Wattbike and wide selection of Cardio and Free Weight equipment. David and Nick invite you to attend a free session to sample the facility. Personal Training, Group Classes and Gym Memberships are available, more information can be found on our website.



MEMBERSHIPS FROM JUST £20 A MONTH!

www.body4you.com 01242 604011

11 Isbourne Business Centre, Isbourne Way, Winchcombe, Gloucestershire, GL54 5NS