

8th
annual

WINCHCOMBE

Festival

MUSIC & ARTS

21–28 May 2018

ART TRAIL



Scan to find
out more ↓



WELCOME

Winchcombe Art Trail

Join Winchcombe's popular annual Art Trail for a unique opportunity to enjoy and buy original works of art and craft directly from the artists.

As well as visiting studios and exhibitions in Winchcombe, a short drive out of the town will take you to the picturesque Cotswold villages of Prestbury, Toddington, Farmcote and Stanway. Stanway House has been used regularly as a film location.

Art workshops and demonstrations for adults and children will also be held throughout the week. For more details visit www.winchcombefestival.co.uk

Kindly sponsored by The Oldham Foundation



Festival enquiries:

Tourist Information Centre (TIC), Town Hall High Street, Winchcombe GL54 5LJ
Mon to Sun: 10.00 am - 2.30 pm Tel: 01242 602925

www.winchcombefestival.co.uk

1 SUSAN WAKEFORD & FRIENDS

Details: All things textile! Pictures, wall hangings, bowls, book covers and Susan's famous fabric pear pincushions. Ideal gifts, all made by members of Brockhampton Quilters.



1 SCULPTURE EXHIBITION

Details: Original sculptures of various media created by Cotswold and regional artists set in the beautiful landscaped gardens of Charingworth Court, curated by Jane Smoczynski.

Venue: Charingworth Court, Broadway Road, Winchcombe GL54 5LN

Time: Tue: 2pm to 5pm, Wed – Sun: 11am to 5pm.

Closed BH Mon. By appointment any other time.

Access: Parking on road

Contact: 01242 603033, 07791 353779 or 07531 844823 (Jane)



2 SAM BUCKINGHAM

Details: A mixed media artist, working with acrylics, pastes, copper and steel. Contemporary and abstract.

Venue: 3 Broadway Road, Winchcombe, GL54 5JJ.

Time: Wed – Thurs: 12pm to 4pm.

Fri, Sat, Sun, BH Mon: 11am to 4pm.

Access: Parking, Disabled access.



3 MERCIA FINE ART

Artist: Roy Meats

Details: The story of Frank. The journey of a scarecrow, with each painting depicting a title or a line from a song.

Venue: Mercia Fine Art, 3 The Emporium, High Street, Winchcombe, GL54 5LJ

Time: Mon – Wed: 9am to 5pm, Thurs: 9am to 12pm,

Fri – Sat: 9am to 5pm, Sun: Closed, BH Mon: 11am - 3pm.

Contact: 01242 603877 www.merciafineart.co.uk



4 WINCHCOMBE ART CLASS STUDENT EXHIBITION

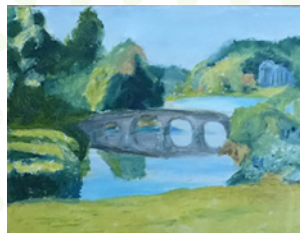
Details: Stylistically diverse original oil paintings from our Art Class's 2nd exhibition. Tutor: Charisse Gardiner.

Venue: The Guide Hall, High Street, Winchcombe, GL54 5LJ

Time: Fri – Sun: 10am to 4pm.

Access: The Guide Hall is accessed by a passageway between the Florist and Ace DIY Store. Parking in main car park off Back Lane and a short walk down Cowl Lane.

Contact: 07894 536474





5 ROBIN AND HEATHER TANNER

Details: A show of rural and floral etchings by Robin Tanner and of country crafts and tools.

Venue: Long Room Gallery, Queen Anne House, High Street, Winchcombe GL54 5LJ

Time: Mon – Sat: 11.00am to 5.00pm.
(otherwise by prior appointment)

Contact: John Edgler 01242 602319 or 07791 782243
www.winchcombearchivecollection.wordpress.com



6 AN EXHIBITION OF SCANDINAVIAN GLASS

Details: The museum plays host to a lone exhibition of Nordic style. Fine and frosted glass both crisp and icy, softly coloured vases of simple liquid form. A smorgasbord of design classics from the past 50 years. Curated by www.newsumantiques.co.uk

Venue: Winchcombe Museum, The Old Town Hall, Winchcombe GL54 5LJ

Time: Mon – Sat: 10am to 4pm. Entry fee.

Access: Stairlift, but not suitable for wheelchair users.



7 ART TRAIL EXHIBITION

Details: Art display by various artists on the Art Trail.

Venue: Winchcombe Antiques Centre & Tea Rooms, Stone House, Abbey Terrace, Winchcombe, GL54 5LL

Time: Mon – Sat: 10.00am to 5.00pm, Sun: 11.00am to 4.00pm.

Contact: www.winchcombeantiquescentre.co.uk



8 LIZ PORAJ-WILCZYNSKA

Details: Archaeological Artist

Venue: Winchcombe Flowers, 14 High Street, Winchcombe GL54 5LJ

Time: Mon – Sat: 9am to 5pm, Sun: 10am to 4pm,
Open BH Mon.

Contact: lizpw@yahoo.co.uk
www.winchcombeflowers.co.uk



9 PHOTOGRAPHIC DISPLAY

Details: Photographic display of Art and Craft by 'The Craftspeople of Stanway' Richard Podd, Jo Baker, Katie Morgan and Rob Langley.

Venue: Food Fanatics, 12 North Street, Winchcombe, GL54 5LH.

Time: Mon – Fri: 8am to 7pm, Sat: 8am to 6pm, Sun: 10am to 5pm.

Contact: www.food-fanatics.co.uk

10 MEIRION JONES

Details: A Winds of Change Exhibition of Welsh Landscapes.

Venue: Barnbury, 14 North Street, Winchcombe GL54 5LH

Time: Mon – Sun: 10am to 5pm.

BH Mon: Closed

Contact: 01242 300330 www.windsofchangegallery.co.uk



11 ART TRAIL EXHIBITION

Details: Art Display by various artists who are part of the Art Trail.

Venue: The Lion Inn, 37 North Street, Winchcombe, GL54 5PS.

Time: Mon – BH Mon: 9.30am to 11pm.

Contact: www.thelionwinchcombe.co.uk



12 BARBARA CURRY

Details: Oil paintings on board and canvas, mainly landscapes of the local area, but also further afield.

Venue: Orchard House, 1 Orchard Road, Winchcombe GL54 5QB.

Access: Look for 2-storey house on corner of Barnmeadow Road and Orchard Road, almost opposite the Delavale Road sign, (Don't rely on Satnav, which will lead you away from the house uphill!) Parking and disabled access.

Time: Mon – Thurs: 11am to 4pm.

Fri – Sat: 11am to 7pm, Sun – BH Mon: 11am-5pm.

Contact: 01242 604118



13 ASHLEY DAVIES

Details: A traditional, realist oil painter.

Venue: 3 Bassett Close, Winchcombe, GL54 5YY

Time: Mon – Tues: 10am to 4pm, Fri – BH Mon: 10am to 4pm.

Access: Parking, disabled access

Contact: 01242 604715



14 WINCHCOMBE POTTERY

Details: Wood-fired domestic stoneware and slipware pottery.

Venue: Broadway Road, Winchcombe, GL54 5NU Pottery is located at the corner of Becketts Lane and Broadway Road.

Time: Mon – Fri: 8am to 5pm, Sat: 10am to 4pm, Sun: 12 noon to 4pm, BH Mon: 10am to 4pm.

Access: Parking in layby across road from pottery.

Contact: 01242 602462





15 ROY MARSHALL

Details: Seascapes, landscapes, abstractions in acrylic, oils, watercolour and mixed media. Exhibited at RWS, RWA and MOMA.

Venue: "R.TUT" Brandy Cottage, 4 The Square, off Church Lane, Toddington GL54 5DJ.

Time: Mon, Wed, Fri: 2pm to 5pm, Sat – BH Mon: 2pm to 7pm.
Tues, Thurs: Closed

Contact: 07955 626894



16 ED ALVIS & JANE SHERWOOD

ED ALVIS

Details: Metal Art. Metal Sculpture for home and garden.

Contact: 07792 061352

JANE SHERWOOD

Details: Natural Willow Crafts

Contact: 07895 820276



Venue: 'Silverwood', Church Lane, Toddington, Glos, GL54 5DN

Time: Mon – Sun: 10am to 5pm, BH Mon: 10am to 4pm. Refreshments available on Fri, Sat, Sun and BH Mon.

Access: Parking, Disabled access



17 CRAFTSPEOPLE OF STANWAY

ROB LANGLEY

Details: Unique, innovative, rustic furniture.

Times: Mon – Sun: 10am to 5pm, BH Mon: Closed

Access: The Furniture Workshop. Parking Disabled access.

Contact: 07854 199914

JOSEPHINE BAKER

Details: Silversmith. Bespoke silver jewellery, handmade and designed at the artist's studio in Stanway. Commissions welcome.

Times: Mon – Sun: 10am to 5pm, BH Mon: Closed.

Access: The Furniture Workshop. Please park near Stanway Watermill and follow signs to Rob's workshop.

Contact: 07928 417362



KATIE B MORGAN

Details: Decorative artist/painter and restorer. Workshop featured in March issue of 'The World of Interiors'.

Times: Mon – Fri: 10.00am to 5.00pm, Sat – Sun: 10.00am to 3.00 pm,
BH Mon: Closed.

Access: The Lime House (The Bothy Shop).
Contact: 07787 904421 www.kbmorgan.co.uk

RICHARD PODD

Details: Stone mason, carver, letterer and designer.

Times: Mon – Sun: 10am to 5pm. Closed BH Mon.

Access: Follow signs, past Rob's workshop, up steps, path alongside Mill Pond and through gate to yard.

Contact: 07504 344519

Venue: Old Stable Yard, Stanway, GL54 5PQ (workshops surround Stanway Watermill)



18 PAINTINGS & SCULPTURE

SARAH LOVEDAY

Details: Oils on canvas or board; landscapes and townscapes local to the area and abroad.

Contact: 01242 602887

DAVID DURSTON

Details: Work varies from large paintings to smaller studies, both abstract and figurative.

Contact: 01451 850287

DOROTA RAPACZ

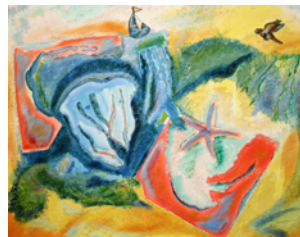
Details: Polish figurative sculptor. Exhibited at The 2016 Society of Portrait Sculptors annual exhibition.

Contact: 07814 583640

Venue: Great Farmcote Cottage, Farmcote, Nr Winchcombe GL54 5AU

Times: Mon: 10pm to 5pm, Tues – Fri: 11am to 5pm. Sat – BH Mon: 11am to 6pm

Access: Parking. No disabled access. Satnav will bring you to the village. Studio is in drive of first house in village, exactly half a mile from village sign. Also follow signs to 'Farmcote Herbs'.



19 STEPHEN BELINFANTE

Details: Stephen makes paintings using a variety of materials, ranging from collaged paper to acrylic and household paints, gaffer tape and bleach!

Venue: 14 Coronation Road, Prestbury GL52 3DU

Time: Mon – Thurs: 11am to 5pm, Fri – Sun: Closed

Access: Parking and disabled access.

Contact: 01242 239619 or 07540 929070

